

# BULKHEAD HOSE KIT

## Installation Instructions

### ⚠ WARNING

**DO NOT** mount below static float plane of boat. This is not a fluid tight fitting.

### ⚠ WARNING

**DO NOT** cut SeaStar Outboard steering hose. There is no means in the field to install a swage fitting to the hose end.

- Determine desired area where the hoses will exit the transom. DO NOT mount below the waterline of the boat as this is NOT a fluid tight fitting.
- Drill two 1" holes through the splashwell or bulkhead, clean hole after drilling to ensure it is free of any burrs that may puncture the steering hoses.
- Feed hose (item 1) though from the outside (the engine side) of the splashwell, inside along the gunwale, or, through PVC tubing, under the deck to the helm pump. Note that the bend restrictor (item 2) is to be installed onto the steering cylinder. DO NOT remove the protective end caps (item 6) until connection to the cylinder and the helm pump are ready to be made.
- Secure bulkhead mounting plate (item 3) to the splashwell of the boat using 3 of #10 screws (item 4, customer supplied).
- Thread the pigtail fitting (item 5) onto the bulkhead mount plate (item 3) and torque to 20 in. lb.
- Secure Hydraulic hose to the steering cylinder and slide the bend restrictor (item 2) over the swage fitting.

### NOTICE

All parts used with the SeaStar Outboard Steering hoses are not available as a single unit. Hose must be ordered complete as per your length required.

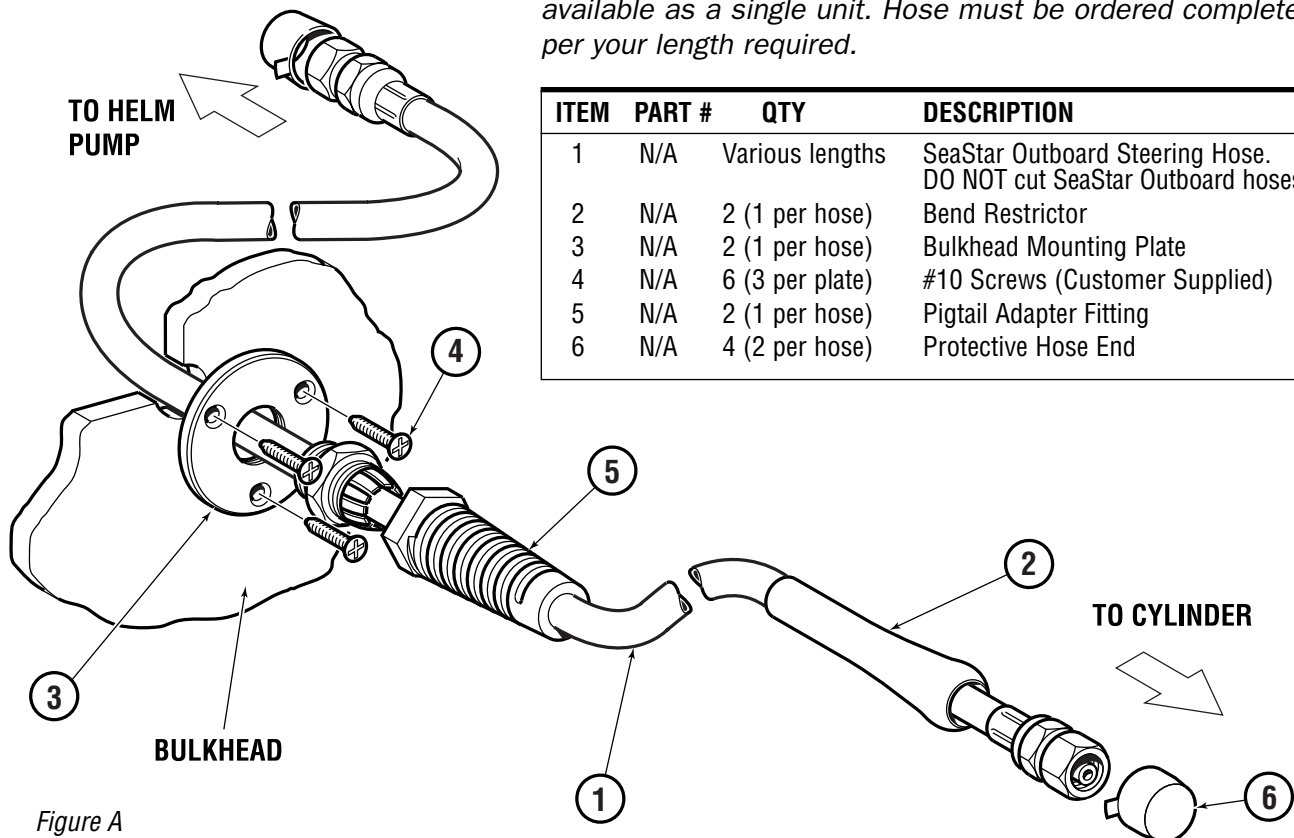


Figure A

ITEM	PART #	QTY	DESCRIPTION
1	N/A	Various lengths	SeaStar Outboard Steering Hose. DO NOT cut SeaStar Outboard hoses.
2	N/A	2 (1 per hose)	Bend Restrictor
3	N/A	2 (1 per hose)	Bulkhead Mounting Plate
4	N/A	6 (3 per plate)	#10 Screws (Customer Supplied)
5	N/A	2 (1 per hose)	Pigtail Adapter Fitting
6	N/A	4 (2 per hose)	Protective Hose End