



POLISHED BULKHEAD SINGLE HOSE KITS

Part# H086XX (1000psi) & H087XX (1500psi PRO Hose)

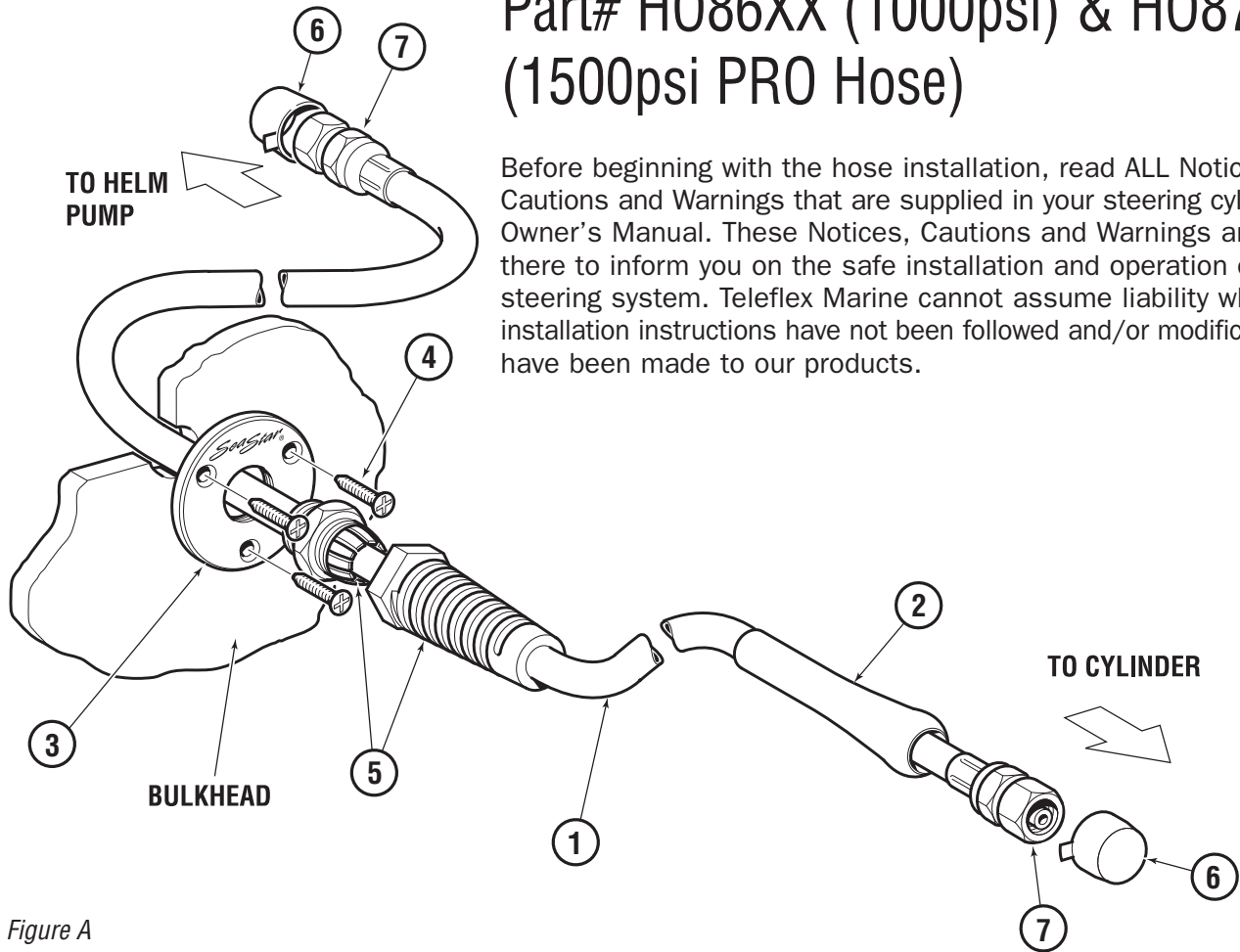


Figure A

Before beginning with the hose installation, read ALL Notices, Cautions and Warnings that are supplied in your steering cylinder Owner's Manual. These Notices, Cautions and Warnings are there to inform you on the safe installation and operation of the steering system. Teleflex Marine cannot assume liability where installation instructions have not been followed and/or modifications have been made to our products.

NOTICE

If spare parts are required an entire new length of hose will need to be ordered. There is no means to swage a new swage fitting (item 7) onto a hose in the field.

ITEM	QTY	DESCRIPTION
1	N/A	SeaStar Outboard Steering Hose Various lengths. DO NOT cut.
2	2	Bend Restrictor. Not available for purchase as a separate item
3	2	Polished Bulkhead Mounting Plate, SINGLE
4	6	#10 Screws (Customer Supplied)

ITEM	QTY	DESCRIPTION
5	2	Pigtail Fitting. Not available for purchase as a separate item
6	4	Dust Cap, Red Dust Cap, Green
7	4	Swage Fitting. Not available for purchase as a separate item

Installation Instructions

- Determine desired area where the hoses will exit the transom. DO NOT mount below the waterline of the boat as this is NOT a fluid tight fitting.
- Drill two 1" holes in desired location through the bulkhead or Splashwell. Clean hole after drilling to ensure it is free of any burrs that may puncture or chafe the steering hose(s).
- Feed hoses (item 1) from the outside of the boat through the splashwell/bulkhead, inside along the gunwale or PVC tubing to the helm pump. Note that the bend restrictor (item 2) is to be installed onto the steering cylinder.

CAUTION

DO NOT remove the protective end caps (item 6) until connection to the cylinder and the helm pump are ready to be made.

- Secure each bulkhead mount plate (Item 3) to the splashwell of the boat using three #10 screws (Item 4, customer supplied).
- Secure hydraulic hoses to the steering cylinder and slide the bend restrictor (item 2) over the swage fitting. Torque fitting (item 7) to 15 ft.lb. (20.34Nm).
- Thread the pigtail fitting (item 5) onto the bulkhead mounting plate (item 3).

CAUTION

Ensure sufficient hose extends through the bulkhead fitting to allow movement of the cylinder through the entire engine motion in ALL trim/tilt positions.

- Torque pigtail fitting (item 5) to 20 in.lb. (2.31 Nm).

WARNING

DO NOT mount below static float plane of boat. This is not a fluid tight fitting.

WARNING

DO NOT cut SeaStar Outboard steering hose. There is no means in the field to install a swage fitting to the hose end.

NOTICE

Individual items (i.e. swage fitting, plate, hose, etc.) cannot be ordered as a single part. If replacement parts are required an entire new length of hose will need to be purchased.